

### Söll SafeLine end clamps with thimble

The new end clamps are compliant with the new EN795:2012 requirements and enable a more reliable and faultless installation. The installer can adjust the cable length without specific tools (i.e. swaging machine).

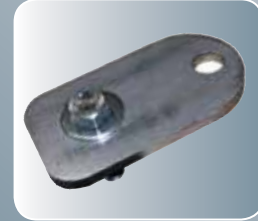
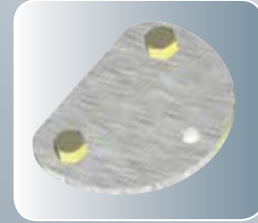


**New!**



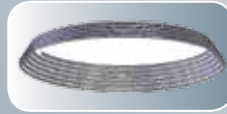
### Söll SafeLine end adaptors

Two types of end adaptors are available for use on either 400mm or 500mm posts.



### Steel cable

An 8mm stainless steel cable is available in different lengths.



Söll SafeLine can only be installed by qualified installers who have undergone appropriate training.

### For more information contact:

#### System Customer Service for technical questions and orders:

Northern Europe  
Phone: +49 (0) 9281 8302 0  
Email: scs-hof@honeywell.com

Southern Europe  
Phone: +33 (0)2 48 53 08 97  
Email: lignedevie.hsp@honeywell.com

#### Honeywell Safety Products:

**United Kingdom**  
Phone: +44 (0) 1256 693 200  
Fax: +44 (0) 1256 693 300  
Email: info-uk.hsp@honeywell.com

**International:**  
Phone: +33 (0)1 49 90 79 79  
Fax: +33 (0)1 49 90 71 04  
Email: info-export.hsp@honeywell.com

**MILLER**

by Honeywell

DOC3486 - 05/2013  
© 2013 Honeywell International Inc.

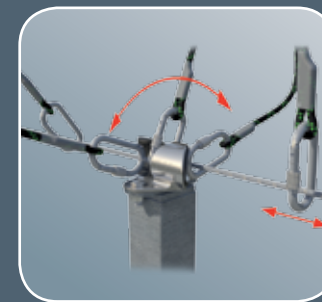
**Lead them to safety** - Build an enduring culture of safety through comprehensive education, innovative technologies, and comfortable, high-performance products. Honeywell Safety Products is the ideal partner for a cultural transformation that inspires workers to make safer choices on their own.

**Honeywell**

**NEW!**

# Söll SafeLine™ 2.0

## Horizontal Lifeline System



- New exceptional shock absorber guarantees structural integrity for roofing applications following EN 795:2012 standard
- An easy to install system with few components that protects up to three workers
- System doubles as anchorage to rescue fallen workers

**MILLER**

by Honeywell





The Söll SafeLine 2.0 Horizontal Lifeline System is an easy to install anchorage device, ideal for roofing applications. The system consists of a limited number of components that need no specific tooling.

The Söll SafeLine 2.0 Horizontal Lifeline System conforms to new EN 795:2012 standards and regulations. It's a high quality, durable system made of corrosion resistant stainless steel and is ideally suited to roof installations. The system also doubles as an anchorage point to easily rescue workers should they fall. If a fall occurs, this effective system prevents structural damage.

The Lifeline System incorporates a unique, state-of-the-art shock absorber, which uses Miller patented 'Force-dispersal Technology' to provide fall protection for up to three workers across a maximum span of 15m, depending on the characteristics of the lifeline.

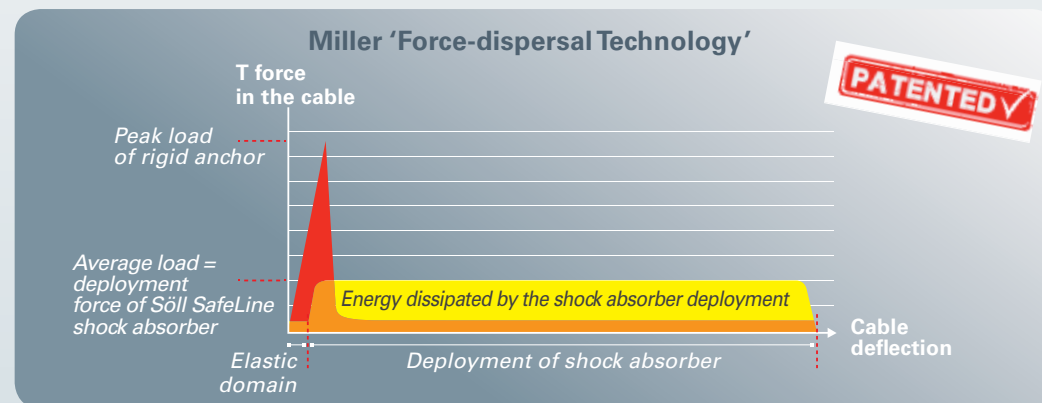
The Lifeline System incorporates a unique, state-of-the-art shock absorber, which uses Miller patented 'Force-dispersal Technology' to provide fall protection for up to three workers across a maximum span of 15m, depending on the characteristics of the lifeline.



## Compliance and testing

The Söll SafeLine 2.0 Horizontal Lifeline System complies with EN 795:2012, the latest European standard for anchor devices.

- To demonstrate that the system would prevent structural damage following a fall as well as provide anchorage to rescue workers, it successfully passed a dynamic strength and an integrity test with a mass of 100kg, plus a further 200kg for three minutes.
- To prove how effective 'Force-dispersal Technology' would perform if up to three workers fell consecutively, the system was put through a 'multiple fall' test. A test mass of 200kg (representing two workers) was initially dropped followed by one extra mass weighing 100kg (representing the third worker). To test for structural integrity, an extra 450kg was added to the load for three minutes.



Unlike standard absorbers and rigid anchors that have a maximum load that affects structural integrity if a fall occurs, the unique 'Force-dispersal Technology' in the Söll SafeLine shock absorber ensures energy is distributed evenly when deployed.



## Easy to install shock absorber with exceptional performance

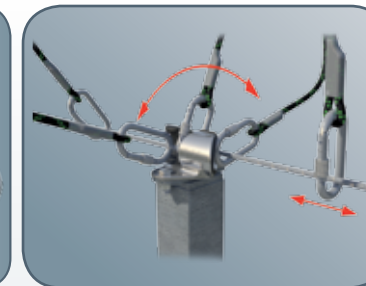
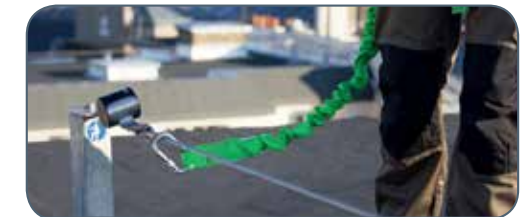
The Söll SafeLine absorber can be easily and rapidly fixed with the axles and pins provided. The black shrink tube around the shock absorber is UV-resistant.

The shock absorber has been designed to disperse energy during a fall to protect both workers and the roof structure. Its patented 'Force-dispersal Technology' ensures that energy is distributed evenly when the shock absorber is deployed.



## Easy to use with karabiner attachment

The user can easily attach and detach at any position along the Söll SafeLine by using their karabiner of choice as connection device.



## Smooth passage of intermediate brackets

The karabiner performs with a continuous, steady movement without interruption through the intermediate bracket. The intermediate bracket is installed between maximum spans of 15m.

## Easy to order kit with installation essentials

Söll Safeline is proposed as a kit containing the new shock absorber, a tensioner with integrated tension indicator, cable end clamps and an identity plate. Additionally to these essential components, only intermediate parts and the correct cable length need to be ordered.



## Söll SafeLine tensioner with integrated tension indicator

The tensioner is easy to adjust and the integrated tension indicator allows for instant check of the right tension in the cable.

